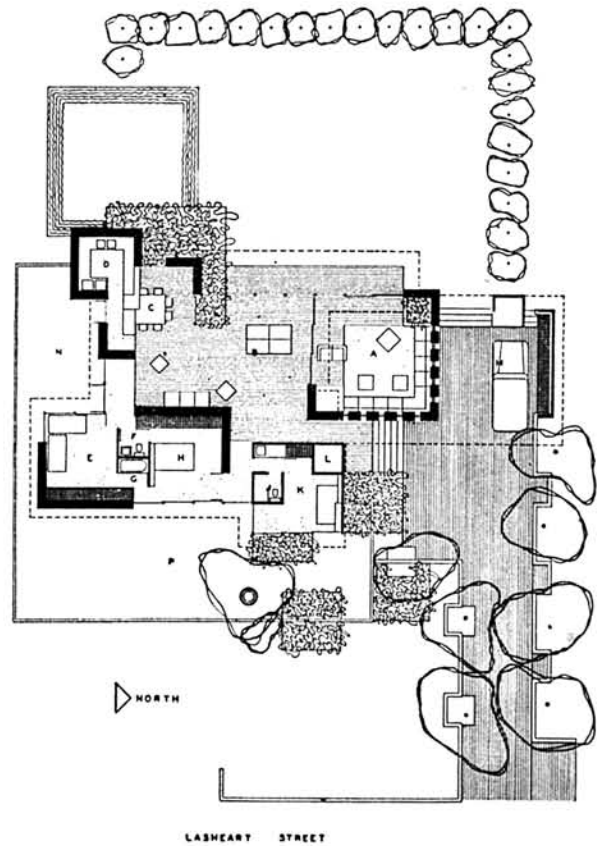
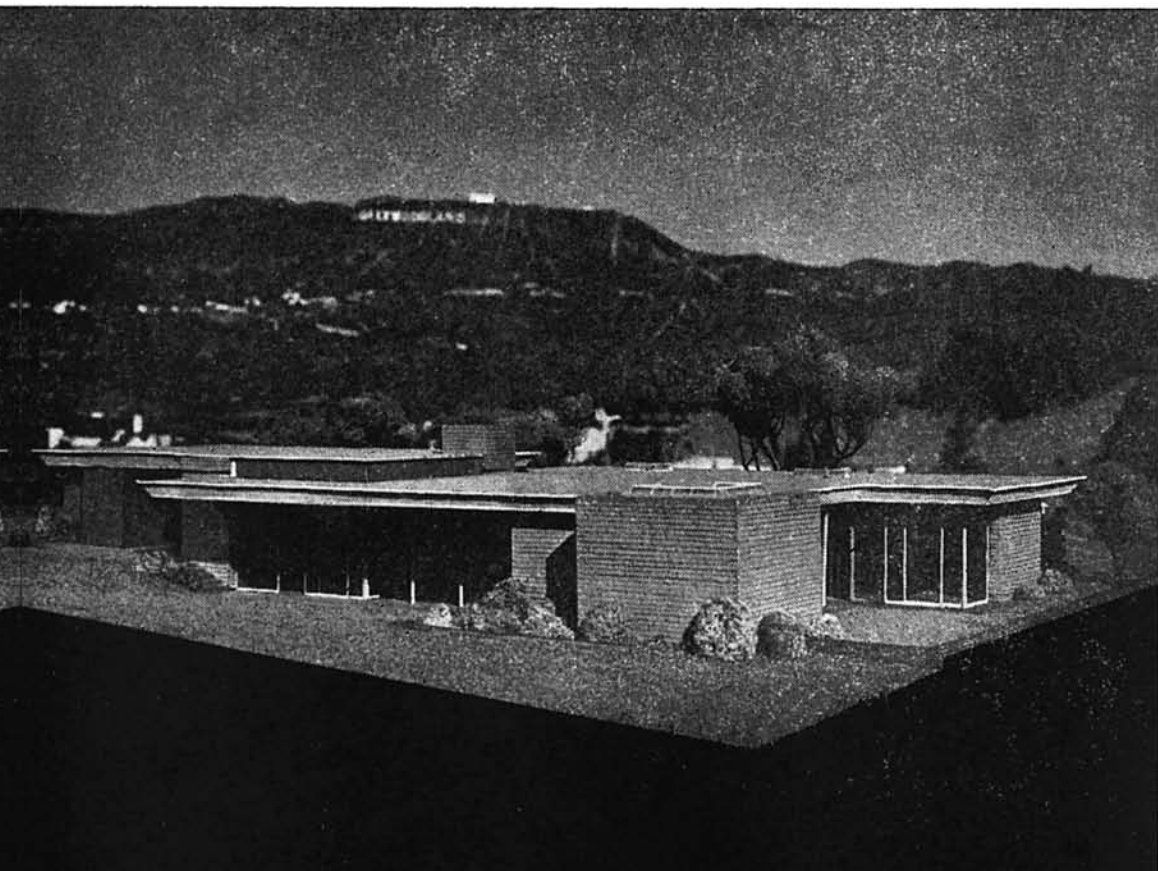


## case study house # 5

WHITNEY R. SMITH, A. I. A., ARCHITECT

THIS IS ADDITIONAL MATERIAL ON THE FIFTH OF THE SERIES OF STUDIES BY NINE NATIONALLY KNOWN ARCHITECTS FOR ARTS & ARCHITECTURE'S CASE STUDY HOUSE PROGRAM. THESE HOUSES WILL BE BUILT BY THE MAGAZINE AS CLIENT AS SOON AS CONDITIONS PERMIT.



■ The "Loggia House" by Whitney R. Smith which was shown in the September issue, is here further explained by photographs of the newly completed model. It will clarify the pattern and the spirit of the house, showing the free use of space and the conception of living islands under one roof, related in general scheme, but each enclosing a complete special purpose unit. The model photographed against the hills will suggest the character of the completed house in its relation to the outdoor areas, and show more clearly the success with which the design creates a fluid living pattern particularly suited to Southern California.

Quoting from the original statement of the architect, ". . . . The central area for family living and entertaining is articulated. The lounge, loggia, and kitchen-dining areas can be either isolated from one another or, by slid-



dining

loggia

living room

store

store

carport

bedroom

laundry

bath

bedroom

living

kitchen

entry

bath

bedroom

carport

street



photographs by Julius Shulman

ing back the glass doors, opened to each other and to the garden. The lounge chairs can be brought out from against the wall in a variety of arrangements, grouped for conversation or games or music. The storage shelves can house a library and myriad supplies. The piano, ping-pong table, and garden bathing pool merely indicate some of the possibilities for rich and varied activity in the indoor-outdoor living possible in Southern California.

The kitchen, screened from the dining area by a buffet counter and storage cabinet, is planned for efficiency. The workspace receives direct skylight. The vista is appropriately to the service and children's play-yard. Bathroom fixtures are separated for simultaneous service. Throughout the house there is adequate general storage and closet space."

